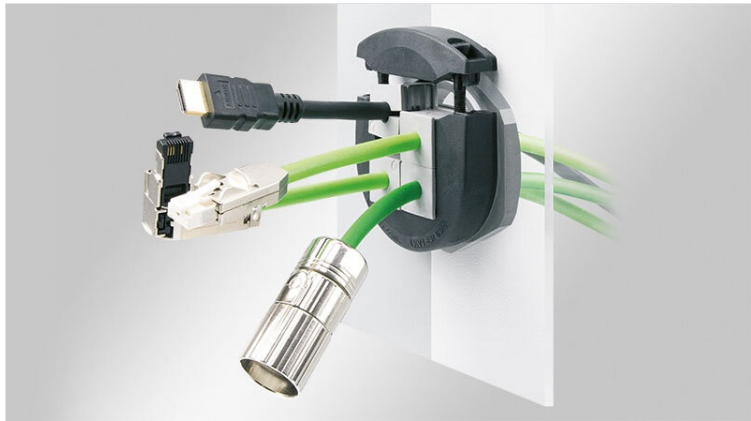


KVT-ER | □□□ □□□ □□□

□□□가 □□□ □□□□, M25 - M63 / IP66 / IP66 / UL Type 12/4X*



KVT-ER □□ 1-16mm (KT 1 - 15) □□ 13-35mm (KTG 13 - KT 34) □□ □□ □□ □□□ □□ □□ □□ □□.

KVT-ER □□ 가 □□□ □□□□ □□, □□ □□□□ □□ □□□□ □□ □□□□ IP65/IP66/IP67/68 □□ □□□□.

□□□□□ □□□ □□ □□ □□ □□ M25, M32, M50, M63 □□, □□ □□□□□□ □□ □□□□□□.

□□□ □□ □□□ □□ □□ □□□ □□ 2.0 Nm □□□□.

*4X □□ □□

IP54	IP55	IP64	IP65	IP66	IP67
IP68	UL TYPE 12	UL TYPE 4X	UL US	RIWA	HL3 EN 45549-2
EN 61373	ECOLAB certified	PNEUMATICS	RoHS compliant	REACH COMPLIANCE	Made in Germany

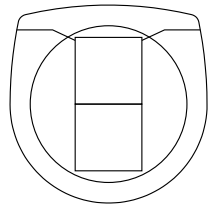
□□ □ □□

- IP66/IP68 □□(EN 60529 □□)
- EN 62444 □□□ □□ □□□ □□
- □□ □□□ □□□□ □□□ □□
- □□□ □□□□ □□ □□
- □□ □□□ □□□ □□□ □□ □□□
- □□ □□□ □□□□□ □□
- □□ □□□□□□ □□
- □□□ □□□□□ □□□
- □□□□□ □□□ □□ □□

IP □□□□ (EN 60529)	IP54, IP55, IP64, IP65, IP66, IP67, IP68
UL Type (UL 50E)	UL Type 12, UL Type 4X*
	□□□ □□□□□□ □□ □□□□□□
	UL94-V0, □□□□□□
	-40 C° to 110 C°
	□□□□□□, □□□□ □□
□□ □□	□□□□□□ □□

□□ □□ □ □□

Model	Diagram	EAN	Part No.	Length	Width	Height	Mounting
KVT-ER 25			45450 4251269319716 10 1 15 mm 46 mm	20 mm	M25	25,3 mm	M25 × 1,5 18 mm 1 x KT □□
KVT-ER 32			45452 4251269318900 10 1 16 mm 46 mm	20 mm	M32	32,3 mm	M32 × 1,5 18 mm 1 x KT □□

KVT-ER 50|2

EAN

□□□ □
 □□ □□□ □□

□□ □□□

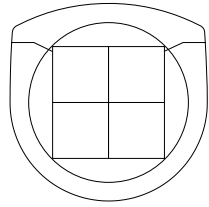
45454
4251269318917
5
2
16 mm

63 mm

□□ □□
 □□□□ □□ □□□
 □□ □□ □□□

□□□ □□
 □□□□ □□

20 mm
M50
50,4 mm
M50 × 1,5
20,5 mm
2 x KT □□

KVT-ER 63|4

EAN

□□□ □
 □□ □□□ □□

□□ □□□

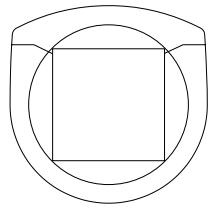
45456
4251269318931
5
4
16 mm

75 mm

□□ □□
 □□□□ □□ □□□
 □□ □□ □□□

□□□ □□
 □□□□ □□

20 mm
M63
63,4 mm
M63 × 1,5
20,5 mm
4 x KT □□

KVT-ER 63|1

EAN

□□□ □
 □□ □□□ □□

□□ □□□

45455
4251269318924
5
1
35 mm

75 mm

□□ □□
 □□□□ □□ □□□
 □□ □□ □□□

□□□ □□
 □□□□ □□

20 mm
M63
63,4 mm
M63 × 1,5
20,5 mm
1 x KT □