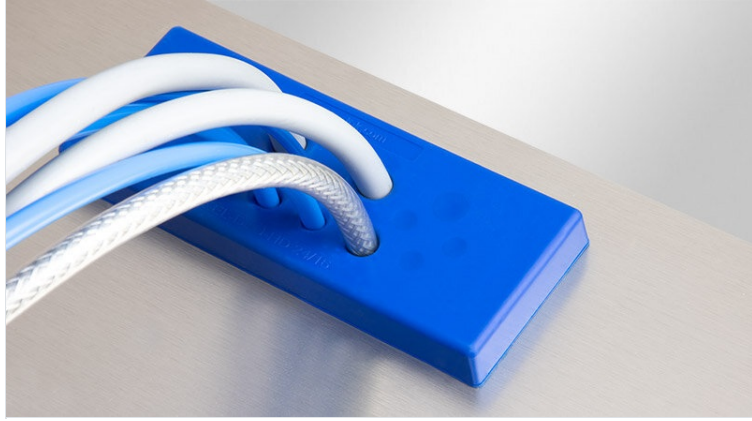


# KEL-DPU-HD

IP66 / IP68, FDA



KEL-DPU-HD는 IP66 / IP68 (Ra = 0,421 µm, ISO 4287), EHEDG의 인증을 받은 3mm와 6mm의 두께를 가진다. 1935/2004/EG (EU) 10/FDA 인증을 받은 이 제품은 FDA 인증을 받은 재료로 만들어졌다.

KEL-DPU-HD는 3.2~22.22mm의 두께를 가진 IP66/68\*\* 인증을 받은 가압용이다. KI 인증을 받은 이 제품은 FDA 인증을 받은 재료로 만들어졌다.

KEL-DPU-HD 24는 24핀의 두께를 가진 IP66/68\*\* 인증을 받은 가압용이다.

\*\* IP66 / IP68 가압용

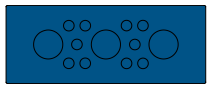
IP54	IP55	IP64	IP65	IP66	IP67
IP68	FDA	1935/2004/EG	EU VO. 10/2011	ECOLAB certified	PNEUMATICS
RoHS compliant	REACH COMPLIANCE	Made in Germany			

<b>IP 인증 (EN 60529)</b>	IP54, IP55, IP64, IP65, IP66, IP67, IP68
	UL94-HB
	-40 C° to 80 C°
	RoHS, REACH, FDA, ECOLAB, PNEUMATICS
제조국	Germany

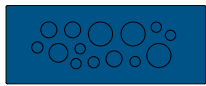
- 1935/2004/EG (EU) 10/2011 인증을 받은 재료
- FDA 인증
- RoHS 및 REACH 준수
- EHEDG 인증 - 가압용
- 표면 거칠기 (Ra = 0,421 µm, ISO 4287)
- IP66 / IP68\*\* 인증
- KI 인증
- FDA 인증
- RoHS 및 REACH 준수
- 두께 3.2-20.5mm
- 가압용
- FDA 인증
- RoHS, REACH, FDA, ECOLAB, PNEUMATICS

## 제품 사양

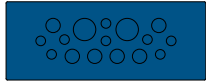
### KEL-DPU-HD 24|13



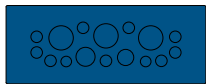
EAN	73940	14 mm
4251269324260	10	14 mm
13	13	표면 거칠기 (ISO 4287)
20,5 mm	20,5 mm	표면 거칠기 (Ra = 0,421 µm, ISO 4287)
147 mm	147 mm	112 x 36 mm
58 mm	58 mm	M4
		1,5 mm
		2 mm
		4
		4 mm
		10 x 3.2 - 6.3 mm
		3 x 16 - 20.5 mm

**KEL-DPU-HD 24|14**

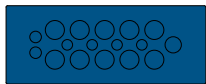
EAN

□□□ □  
□□ □□□ □□**73944**  
**4251269324277**  
**10**  
**14**  
**10,5 mm**  
**147 mm**  
**58 mm**□□ □□  
□□ □□□ (ISO 4287)  
□□ □□□  
□□ □ □□  
□□ □ □□  
□□ □ □  
□□□ □□  
□□□ □□ □**14 mm**  
**14 mm**  
□□(RAL 5005□ □□)  
**Ra = 0,421 μm**  
**112 × 36 mm**  
**M4**  
**1,5 mm**  
**2 mm**  
**4**  
**4 mm**  
**5 × 3.2 - 6.3 mm**  
**2 × 4 - 7.5 mm**  
**3 × 5.5 - 10.5 mm**  
**1 × 8 - 12.5 mm**  
**3 × 12 - 16.2 mm****KEL-DPU-HD 24|16**

EAN

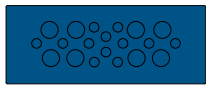
□□□ □  
□□ □□□ □□**73936**  
**4251269324284**  
**10**  
**16**  
**14,5 mm**  
**147 mm**  
**58 mm**□□ □□  
□□ □□□ (ISO 4287)  
□□ □□□  
□□ □ □□  
□□ □ □□  
□□ □ □  
□□□ □□  
□□□ □□ □**14 mm**  
**14 mm**  
□□(RAL 5005□ □□)  
**Ra = 0,421 μm**  
**112 × 36 mm**  
**M4**  
**1,5 mm**  
**2 mm**  
**4**  
**4 mm**  
**8 × 3.2 - 5.5 mm**  
**6 × 5 - 8.5 mm**  
**2 × 9.5 - 14.5 mm****KEL-DPU-HD 24|16-1**

EAN

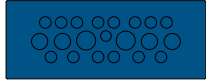
□□□ □  
□□ □□□ □□**73932**  
**4251269324291**  
**10**  
**16**  
**16,2 mm**  
**147 mm**  
**58 mm**□□ □□  
□□ □□□ (ISO 4287)  
□□ □□□  
□□ □ □□  
□□ □ □□  
□□ □ □  
□□□ □□  
□□□ □□ □**14 mm**  
**14 mm**  
□□(RAL 5005□ □□)  
**Ra = 0,421 μm**  
**112 × 36 mm**  
**M4**  
**1,5 mm**  
**2 mm**  
**4**  
**4 mm**  
**2 × 3.2 - 6.3 mm**  
**9 × 4 - 7.5 mm**  
**1 × 5.5 - 10.5 mm**  
**1 × 8 - 12.5 mm**  
**3 × 12 - 16.2 mm****KEL-DPU-HD 24|17**

EAN

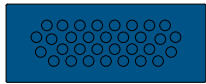
□□□ □  
□□ □□□ □□**73934**  
**4251269324307**  
**10**  
**17**  
**12,5 mm**  
**147 mm**  
**58 mm**□□ □□  
□□ □□□ (ISO 4287)  
□□ □□□  
□□ □ □□  
□□ □ □□  
□□ □ □  
□□□ □□  
□□□ □□ □**14 mm**  
**14 mm**  
□□(RAL 5005□ □□)  
**Ra = 0,421 μm**  
**112 × 36 mm**  
**M4**  
**1,5 mm**  
**2 mm**  
**4**  
**4 mm**  
**4 × 3.2 - 6.3 mm**  
**2 × 4 - 7.5 mm**  
**1 × 5.5 - 10.5 mm**  
**10 × 8 - 12.5 mm**

**KEL-DPU-HD 24|20**

EAN

□□□ □  
□□ □□□ □□**73938**  
**4251269324314**  
**10**  
**20**  
**10,5 mm**  
**147 mm**  
**58 mm**□□ □□  
□□ □□□ (ISO 4287)  
□□ □□□  
□□ □ □□  
□□ □ □□  
□□ □ □□  
□□□ □□  
□□□ □□ □**14 mm**  
**14 mm**  
□□(RAL 5005□ □□)  
**Ra = 0,421 μm**  
**112 × 36 mm**  
**M4**  
**1,5 mm**  
**2 mm**  
**4**  
**4 mm**  
**12 × 3.2 - 5.5 mm**  
**8 × 5 - 10.5 mm****KEL-DPU-HD 24|21**

EAN

□□□ □  
□□ □□□ □□**73930**  
**4251269324321**  
**10**  
**21**  
**12,5 mm**  
**147 mm**  
**58 mm**□□ □□  
□□ □□□ (ISO 4287)  
□□ □□□  
□□ □ □□  
□□ □ □□  
□□ □ □□  
□□□ □□  
□□□ □□ □**14 mm**  
**14 mm**  
□□(RAL 5005□ □□)  
**Ra = 0,421 μm**  
**112 × 36 mm**  
**M4**  
**1,5 mm**  
**2 mm**  
**4**  
**4 mm**  
**1 × 3.2 - 6.3 mm**  
**14 × 4 - 7.5 mm**  
**4 × 5.5 - 10.5 mm**  
**2 × 8 - 12.5 mm****KEL-DPU-HD 24|32**

EAN

□□□ □  
□□ □□□ □□**73942**  
**4251269324338**  
**10**  
**32**  
**6,3 mm**  
**147 mm**  
**58 mm**□□ □□  
□□ □□□ (ISO 4287)  
□□ □□□  
□□ □ □□  
□□ □ □□  
□□ □ □□  
□□□ □□  
□□□ □□ □**14 mm**  
**14 mm**  
□□(RAL 5005□ □□)  
**Ra = 0,421 μm**  
**112 × 36 mm**  
**M4**  
**1,5 mm**  
**2 mm**  
**4**  
**4 mm**  
**32 × 3.2 - 6.3 mm**