

EMC-KEL-U | Split EMC cable entry frames

for shielding cables with connectors



RoHS
compliant



Made in
Germany

The EMC cable entry frames EMC-KEL-U are based on the KEL-U and KEL-E. Due to a conductive surface, disturbances in the cable shields on the control cabinet can be easily dissipated. Field bound disturbances are derived by the metallisation.

The cable entry system is easy to install. Cable grommets are placed into compartments and are securely fixed to the frame during assembly.

The EMC-KEL-U frames match exactly the cut-out dimensions for 16- and 24-pin standard industrial connectors. Either a cut-out of 36 mm or 46 mm in height can be chosen depending on the cables being routed.

The single-row versions EMC-KEL-E are particularly suited for flat connectors. The small frames are ideal for applications with limited space.

Between the EMC-KEL-U and the metal wall a conductive flat gasket (included) is mounted. The flange surface on the metal wall must be free of paint!

Specifications

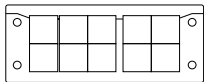
Material	Polyamide, highly conductive coating
Flame class	UL94-HB
Operating temperature	-40 C° to 140 C°
Properties	vibration proof
Mounting options	Screw type mounting

Advantages & benefits

- Both conducted and field-bound disturbances can be reliably diverted
- Scratch-resistant surface
- Contacting the cable shield over 360°
- EMC grommets made entirely from conductive elastomer
- High cable density, wide variety of grommets
- Very good dissipation values
- Very good shielding effect with regard to EMC tightness

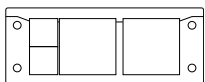
Product types & sizes

EMC-KEL-U 24|10

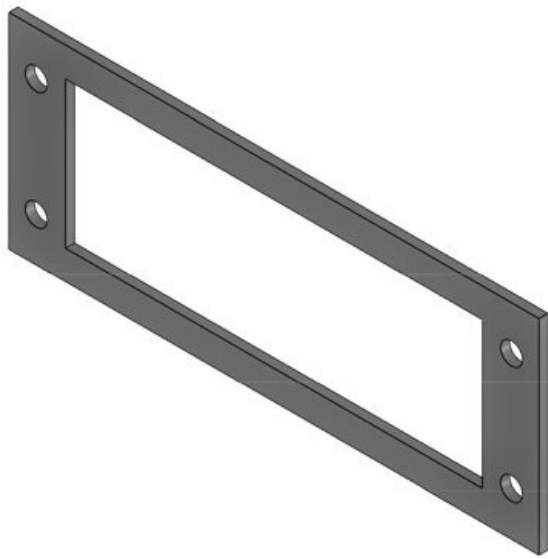


Part No.	99400	Height	17 mm
EAN	4251269319365	Mounting height	17 mm
Package quantity	1	Cut-out size	112 x 36 mm
For max. no. of cables	10	No. of screw holes	4
Max. cable diameter	17 mm	Diam. of screw holes	5,8 mm
Length	147 mm	Screw material	Mild steel, galvanically zinc plated
Width	58 mm	Suitable for grommets	10 x EMC-KT small

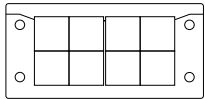
EMC-KEL-U 24|4



Part No.	99401	Height	17 mm
EAN	4251269319372	Mounting height	17 mm
Package quantity	1	Cut-out size	112 x 36 mm
For max. no. of cables	4	No. of screw holes	4
Max. cable diameter	35 mm	Diam. of screw holes	5,8 mm
Length	147 mm	Screw material	Mild steel, galvanically zinc plated
Width	58 mm	Suitable for grommets	2 x EMC-KT small 2 x EMC-KT large

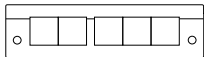


Part No.	98047	Cut-out size	112 × 36 mm
EAN	4251269322655	No. of screw holes	4
Package quantity	1	Diam. of screw holes	6 mm
Length	145 mm	Screw material	Mild steel, galvanically zinc plated
Width	56 mm		
Height	2,5 mm		
Mounting height	2,5 mm		

EMC-KEL-U 16|8

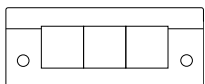
Part No.	99402
EAN	4251269319389
Package quantity	1
For max. no. of cables	8
Max. cable diameter	17 mm
Length	120 mm
Width	58 mm

Height	17 mm
Mounting height	17 mm
Cut-out size	86 × 36 mm
No. of screw holes	4
Diam. of screw holes	5,8 mm
Screw material	Mild steel, galvanically zinc plated
Suitable for grommets	8 x EMC-KT small

EMC-KEL-E5

Part No.	99422
EAN	4251269319402
Package quantity	1
For max. no. of cables	5
Max. cable diameter	17 mm
Length	147 mm
Width	39 mm

Height	17 mm
Mounting height	17 mm
Cut-out size	112 × 24 mm
No. of screw holes	2
Diam. of screw holes	5,8 mm
Screw material	Mild steel, galvanically zinc plated
Suitable for grommets	5 x EMC-KT small

EMC-KEL-E3

Part No.	99420
EAN	4251269319396
Package quantity	1
For max. no. of cables	3
Max. cable diameter	17 mm
Length	98 mm
Width	39 mm

Height	17 mm
Mounting height	17 mm
Cut-out size	65 × 24 mm
No. of screw holes	2
Diam. of screw holes	5,8 mm
Screw material	Mild steel, galvanically zinc plated
Suitable for grommets	3 x EMC-KT small

