

# KEL-BES brush plate

for cable pass-through



RoHS  
compliant



Made in  
Germany

Brush plates KEL-BES for routing cables into server racks, control panels and electrical enclosures. KEL-BES is also an ideal solution for entry and exit of cables that are routed inside raised floors, e.g. in computer centres.

The brush plates can either be mounted via screws or via [expanding rivets](#).

The KEL-BES plates match exactly the cut-out dimensions 10-, 16- and 24-pin standard industrial connectors.

## Specifications

|                              |                                 |
|------------------------------|---------------------------------|
| <b>Material</b>              | Polyamide<br>Brushes: Polyamide |
| <b>Flame class</b>           | UL94-V0, self-extinguishing     |
| <b>Operating temperature</b> | -20 C° to 90 C°                 |
| <b>Properties</b>            | silicone free, halogen free     |
| <b>Mounting options</b>      | Screw type mounting, Riveting   |

## Advantages & benefits

- Fast and easy assembly
- Versatile utilisation
- Allows reduced airflow while filtering out dust, hair and larger particulate matter
- Visual screening
- Protects cables against wear due to sharp edges of the cut-out

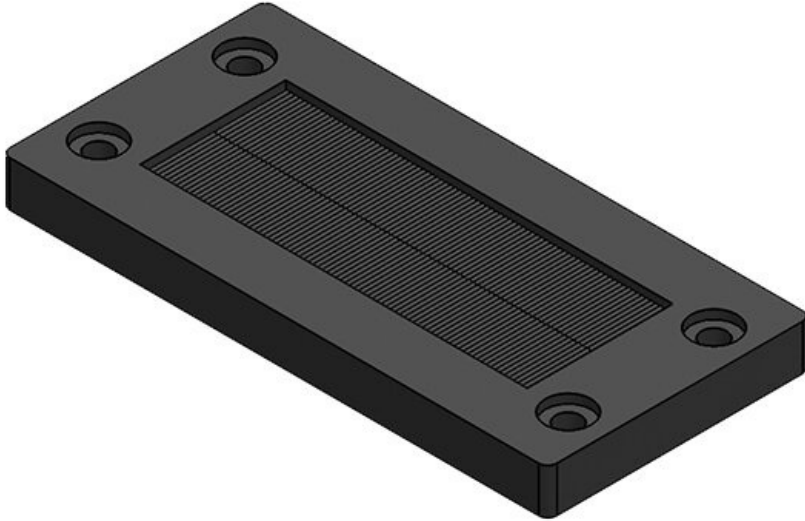
## Product types & sizes

KEL-BES 24



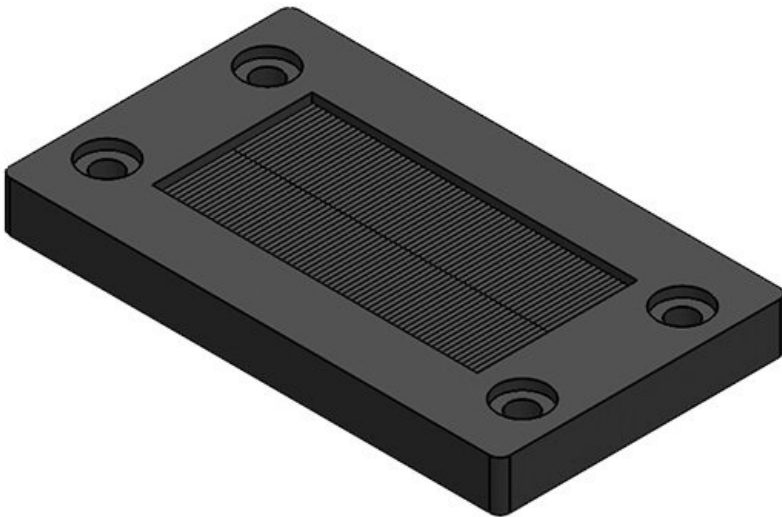
|                  |                   |                      |                    |
|------------------|-------------------|----------------------|--------------------|
| Part No.         | <b>51515</b>      | Cut-out size         | <b>112 × 36 mm</b> |
| EAN              | <b>4251269315</b> | No. of screw holes   | <b>4</b>           |
| Package quantity | <b>442</b>        | Diam. of screw holes | <b>5,8 mm</b>      |
| Length           | <b>147 mm</b>     |                      |                    |
| Width            | <b>58 mm</b>      |                      |                    |
| Height           | <b>10 mm</b>      |                      |                    |
| Mounting height  | <b>10 mm</b>      |                      |                    |

**KEL-BES 16**



|                  |                   |                      |                   |
|------------------|-------------------|----------------------|-------------------|
| Part No.         | <b>51510</b>      | Cut-out size         | <b>86 × 36 mm</b> |
| EAN              | <b>4251269315</b> | No. of screw holes   | <b>4</b>          |
| Package quantity | <b>10</b>         | Diam. of screw holes | <b>5,8 mm</b>     |
| Length           | <b>120 mm</b>     |                      |                   |
| Width            | <b>58 mm</b>      |                      |                   |
| Height           | <b>10 mm</b>      |                      |                   |
| Mounting height  | <b>10 mm</b>      |                      |                   |

**KEL-BES 10**



|                  |                   |                      |                   |
|------------------|-------------------|----------------------|-------------------|
| Part No.         | <b>51505</b>      | Cut-out size         | <b>65 × 36 mm</b> |
| EAN              | <b>4251269315</b> | No. of screw holes   | <b>4</b>          |
| Package quantity | <b>10</b>         | Diam. of screw holes | <b>5,8 mm</b>     |
| Length           | <b>100 mm</b>     |                      |                   |
| Width            | <b>58 mm</b>      |                      |                   |
| Height           | <b>10 mm</b>      |                      |                   |
| Mounting height  | <b>10 mm</b>      |                      |                   |